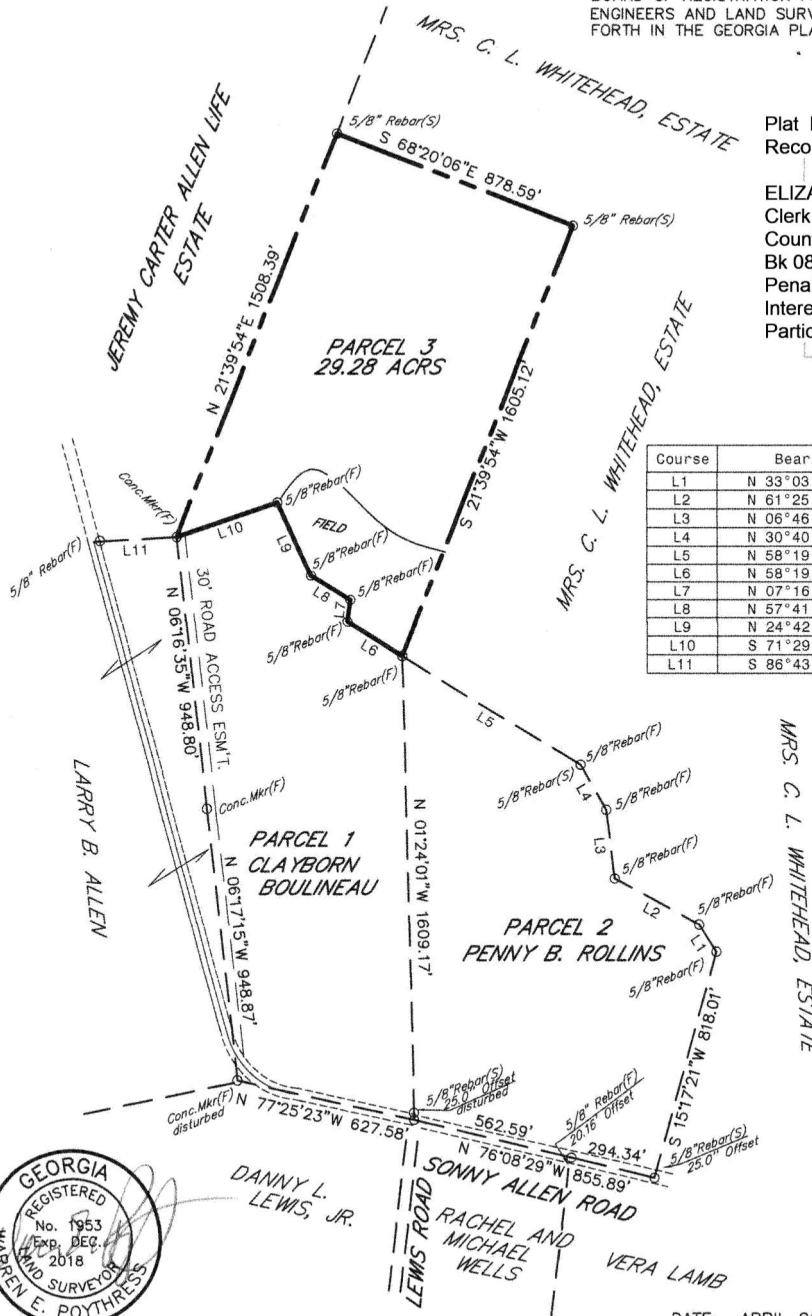


THIS SURVEY WAS PREPARED IN CONFORMITY WITH THE TECHNICAL STANDARDS FOR PROPERTY SURVEYS IN GEORGIA AS SET FORTH IN CHAPTER 180-7 OF THE RULES OF THE GEORGIA BOARD OF REGISTRATION FOR PROFESSIONAL ENGINEERS AND LAND SURVEYORS AND AS SET FORTH IN THE GEORGIA PLAT ACT O.C.G.A. 15-6-67.

Plat Doc: PLAT
Recorded 04/26/2017 08:29AM

ELIZABETH T. LANDING
Clerk Superior Court, JENKINS
County, Ga.
Bk 08217 Pg 0022
Penalty: \$0.00
Interest: \$0.00
Participants: 7737673228



Course	Bearing	Distance
L1	N 33°03'16" W	109.07'
L2	N 61°25'08" W	332.23'
L3	N 06°46'02" W	243.35'
L4	N 30°40'12" W	177.80'
L5	N 58°19'32" W	723.10'
L6	N 58°19'32" W	221.61'
L7	N 07°16'55" E	77.71'
L8	N 57°41'46" W	161.79'
L9	N 24°42'10" W	276.70'
L10	S 71°29'36" W	368.75'
L11	S 86°43'46" W	288.06'



C:\SU\DATA\A-B\BOULINEAU, CLAY SISTER
JENKINS COUNTY 29.28 AC.DWG
CF:BOULCLAY

**PROPERTY SURVEY
FOR
BUFFY BOULINEAU**

**LOCATED IN THE 1639TH G. M. D.,
JENKINS COUNTY, GEORGIA**

DATE: APRIL 26, 2017
BY: WARREN E. POYTHRESS
Reg. Land Surveyor # 1953
991 Hunters Road Sylvania, Ga.
30467 Tele. - (912) 857-3288
EQUIP: TOPCON 303 TOTAL STATION
THE FIELD DATA UPON WHICH THIS
MAP OR PLAT IS BASED HAS A
CLOSURE PRECISION OF ONE FOOT
IN 78061 FEET, AND ANGULAR
ERROR OF 05 SECONDS PER ANGLE
POINT. AFTER ADJUSTMENTS BY
THE COMPASS RULE THE FINAL PLAT
HAS BEEN CALCULATED FOR CLOSURE
AND IS FOUND TO BE ACCURATE WITH-
IN ONE FOOT IN 455384 FEET.

478-299-8813